

MPI SIRIUS Software Suite /

The Next-Gen Software Development & Integration Platform

■ APPLICATION



Automated Test



Data Analysis



Instrument Integration



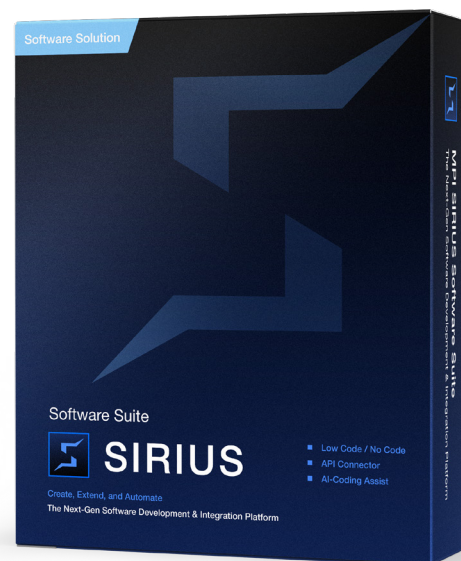
Defect Inspection



OCR



Test Simulation



**SIMPLE FOR BEGINNERS,
POWERFUL FOR EXPERTS**

■ OVERVIEW

Create, extend, and automate apps and processes with Low Code / No Code (LCNC) platform and AI coding assist.

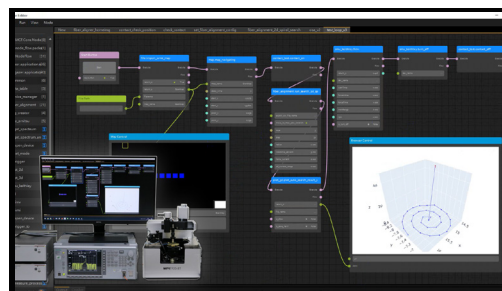
SIRIUS is a Low Code / No Code (LCNC) platform that enables you to create, extend, and automate the apps and processes using drag-and-drop builder and generative AI coding assistance. The API connector facilitates interaction and integration between different applications. The modular design also incorporates CI/CD in software development cycle and generative AI technologies, significantly enhancing productivity to the next level. Whether you're involved in high-volume production or research prototyping—whether you're an experienced developer or a new employee—the SIRIUS Next-Gen Software Development / Integration Platform will turn your needs into reality.

■ KEY FEATURES

Ready to connect

SIRIUS uses API connector to streamline interaction and integration across various application developments. This enables you to quickly create custom apps and processes tailored to your needs, thereby enhancing productivity.

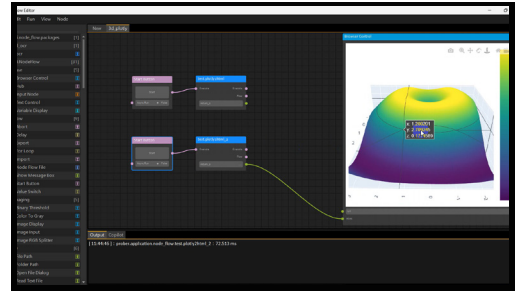
- Design and test products in a virtual environment to shorten development cycles and reduce costs
- Use simulations to assess risks and potential issues, enabling more effective strategies and solutions



Low Code and No Code (LCNC)

Rapidly build, extend, and automate your applications with the simple drag-and-drop builder and a friendly user interface.

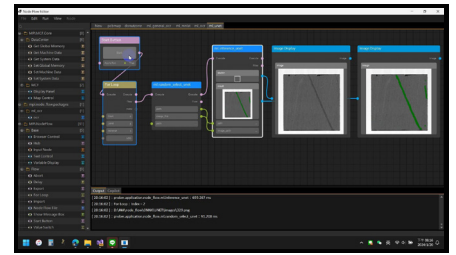
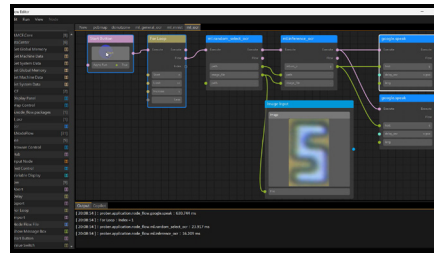
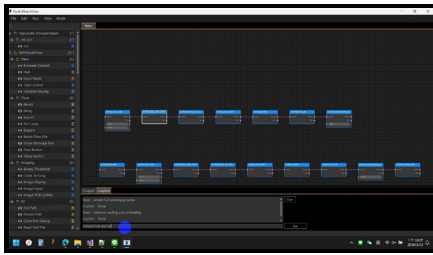
- Shorten development cycles with modular, reusable blocks
- Coding with Python to create and extend modules



AI-powered technology

Incorporates AI technologies for large-scale data analysis to better understand trends and enhance test quality.

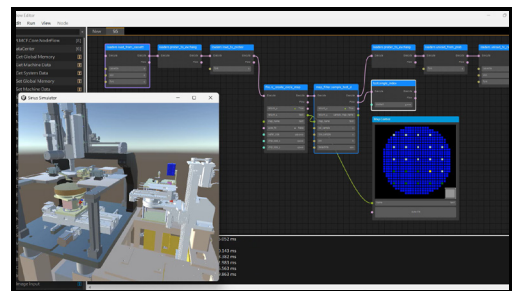
- Reduced manual operation time and error rates
- Integrate data across all your application in one place to collaborate and work better together
- Versatile applications: defect inspection, OCR recognition, data analysis and more
- Copilot-friendly, assisting you in quickly generating process workflows



Digital Twin technology

Implement Digital Twin technology to simulate outcomes in various use cases, supporting decision-making and enhancing efficiency.

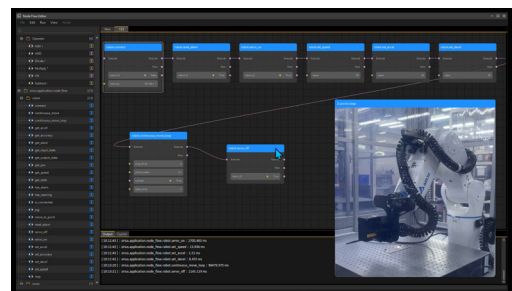
- Design and test products in a virtual environment to shorten development cycles and reduce costs
- Use simulations to assess risks and potential issues, enabling more effective strategies and solutions



Build apps your way

SIRIUS is fully customizable and scalable. You can add modules such as automated motion control, measurement instruments, visual inspection, robots, and more to accommodate diverse use cases, creating a total solution that truly fits your need.

- Optimize your process flow and integrate modules with ease
- Compatible with various leading vendors and products



■ MODULE COMPATIBILITY & INTEGRATION OPTIONS

Compatible modules and vendors*

Script	Python
EtherCAT	ADLINK, Delta
GPIO Device	NI, ADLINK
Camera	GenICam, Hikrobot, Basler, Teli, ArtCAM, DYNACOLOR, Euresys, Hamamatsu
Motion Device	ETEL, ADLINK, Advantech
Machine Vision	HALCON, OpenCV
Robot	DENSO, Delta
Barcode Reader	AIDA, CINO, DATALOGIC, IOSS

*This list may not be exhaustive, please contact MPI to discuss the details of your project configuration.

Programming languages

SIRIUS offers a flexible modular system architecture, allowing you to develop the platform with **.NET**, **Python**, and **JavaScript**. It supports seamless cross-module integration and lets you add custom functionalities as needed, boosting development efficiency and scalability.

Measurement instrument integration

MPI System	TP20-BT*
Keithley	Switch Matrix: 700 series SMU: 2600 series
Keysight	LCR Meter: E4980A
Protocol	SCPI, GPIB, TCP/IP

*Other MPI test systems are available on a project basis. Please contact MPI for further details.

MPI Photonics Automation
Email: pa-sales@mpi-corporation.com
Phone: +886 3 555 1771
No.155, Chung-ho St., Chupei, Hsinchu, Taiwan 30267

For personalized local support, reach out to us via email. Our team will quickly connect you with a dedicated local sales representative to meet your needs.
© 2024 MPI Corporation. All rights reserved.

All pictures shown, including the package box image, are for illustration and visual representation purposes only and may deviate from the actual product due to technical enhancements or other updates.

