





BoA Merrill Lynch Conference
MPI Corporation
(6223.TT)

1





Safe Harbor Notice

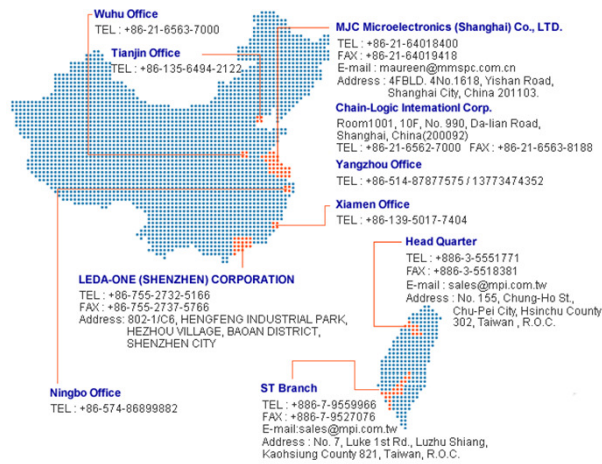
The information herein contains forward-looking statements. We have based these forward-looking statements on our current expectations and projections about future events. Although we believe that these expectations and projections are reasonable, such forward-looking statements are inherently subject to risks, uncertainties and assumptions about us, including, among other things: the intensely competitive semiconductor, LED and LCD industries and markets; Cyclical nature of the semiconductor industry; Risks associated with global business activities; General economic and political conditions; Other risks identified in our annual report for the year ended December 31st, 2010. All financial figures discussed herein are prepared pursuant to ROC GAAP on an un-audited unconsolidated basis. All audited figures will be publicly announced upon the completion of our audited process.

Company at a Glance

Founded July 25, 1995

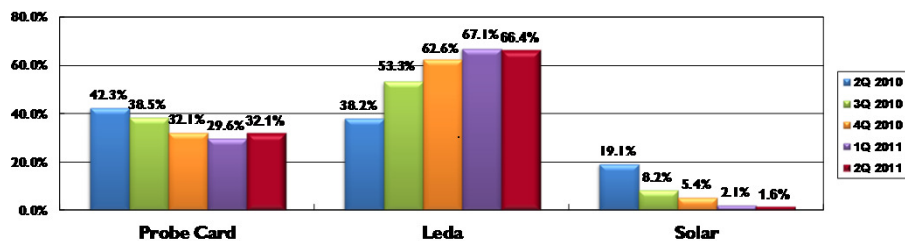
Paid-in Capital NTD\$ 785.5M
(2011.06.30-the latest)

Employees 828 (2011.06.30)





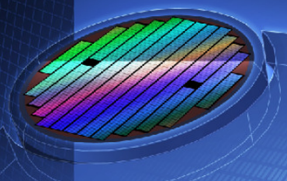
3


2010 Business Portfolio



4







LED

5





2 in 1 Machine (Prober + Sorter)



Specifications

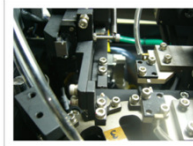
Dimension Wide : 1400mm Height : 1650mm (not included signal-tower) Length : 1530mm Weight : 1000Kg	Wafer Size Max 6"(150mm) after expansion (for GR6/GR5)	Bin Area 60mm X 60mm
Loader Wafer Cassette : 2 (8 rings for GR6/GR5) Bin Cassette : 6 (25 bins with a single Cassette)	Pattern Recognition System PR System : 256 grey levels Resolution : 640 pixels x 480 pixels PR Accuracy: ± 0.025 mil(Die size 64mil x 48mil) Angle Range : ± 15°	

- Reduce spacing demand for capex
- Reduce workforce
- Process improvement

6

Auto Sorting Machines

PT-380 SORTING



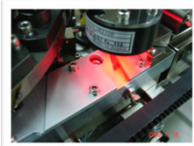
Specifications

Applicable device: Chip type LED
 Loader: Parts feeder
 Number of test station: 1 (2: option)
 Test method: Side or top surface contact
 Cycle time: Max 0.15 sec/pcs (UPH24K)
 (Including 90msec test time)
 Number of bin: 256 bulk bins
 Vacuum source: Vacuum pump
 Size: W1,160 x H1,458 x D788(mm)

7

Auto Taping Machine

PT-350 TAPING

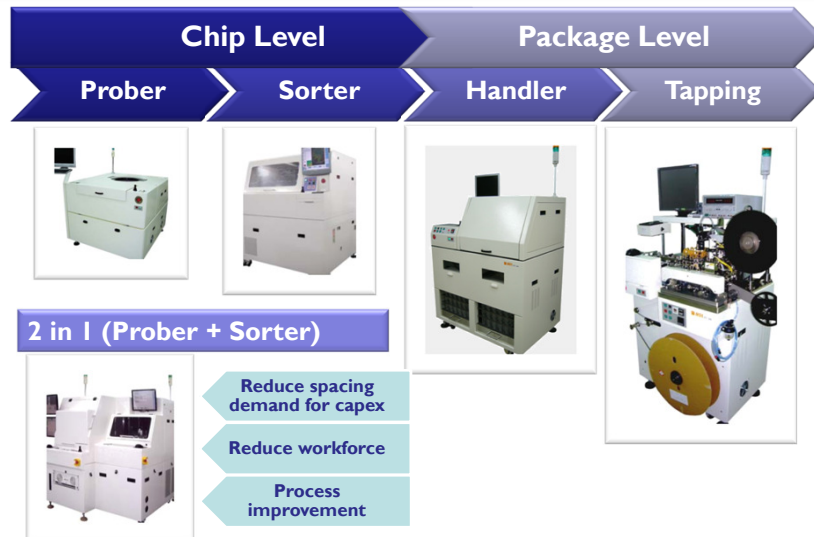


Specifications

Applicable device: Each chip type devices
 Embossed Carrier tape width: 8 (mm)
 Supply reel/ Accept reel: Max. Ø700/ Max. Ø330
 Loader: Parts feeder with hopper
 Seal method: Heat press reciprocating method
 Cycle time: 0.09 sec/pcs (666pcs/min)
 Vacuum source: Vacuum pump
 Vision: Vision Align and check device
 Size: W870 x H1,352 x D681(mm)

8

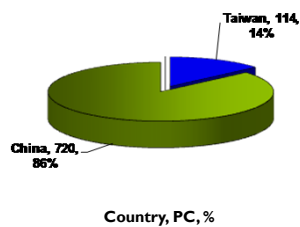
LED Turnkey Solution for Probing and Sorting in Chip level and package level



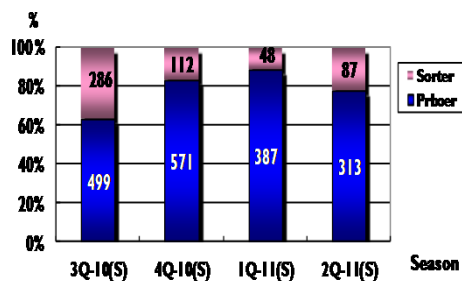
9

Geography & Product Mix

by Geography



by Product

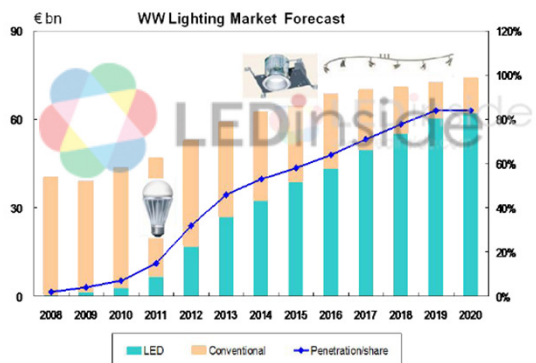


10

Growth Driver – LED lighting

LED Lighting Is Taking Off

- The LED lighting is penetrating € 70bn lighting market:
- 50% penetration rate by 2015 is projected by Philips,
- and 30% LED lamp in 2010 is projected in Japan market.



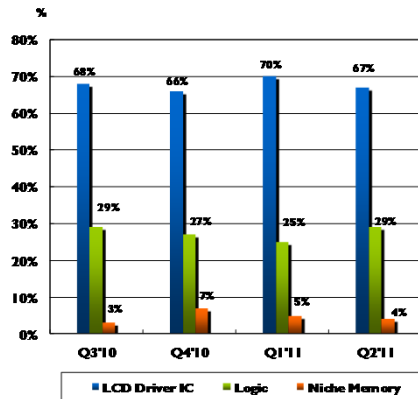
11



Probe Card

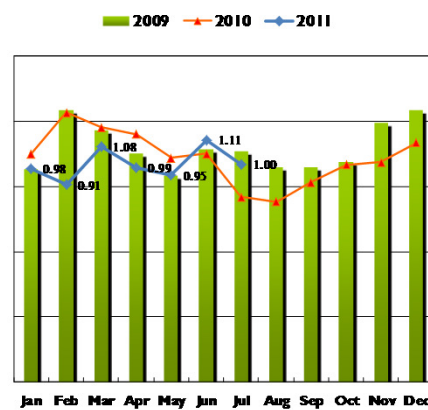
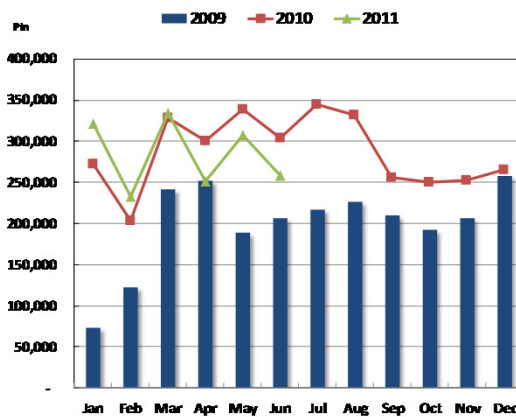
12

Product Mix



13

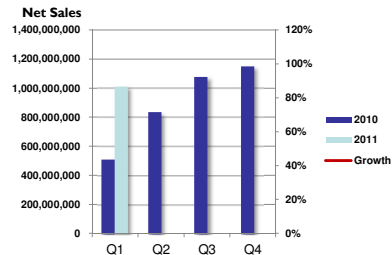
Pin-Shipment & B/B Ratio



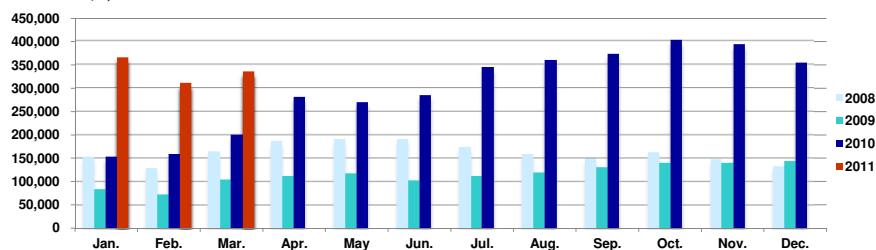
14

Income Statement

	NT\$1,000	Q1' 2011	Q1' 2010	YoY(%)
Net Sales		1,011,777	514,256	97%
Cost of Goods Sold		566,792	312,687	81%
Gross Profit		444,985	201,569	121%
Operating Expense		243,825	145,407	68%
Operating Income		199,022	55,898	256%
Investment Income & Other		24,018	17,104	40%
Net Income (before tax)		223,040	73,002	206%
EPS (before tax)		2.81	0.95	



Net Sales NT\$ 1,000



15

Balance Sheet Highlight

Amount: NT\$ Million	Q1' 2011		Q1' 2010	
Cash and Cash Equivalents	1,312	22%	614	15%
Long-term Investments	494	8%	436	11%
Fixed Assets	988	17%	1,156	29%
Total Assets	5,924	100%	4,039	100%
LT Debt	93	2%	254	6%
Shareholders' Equity	3,252	48.6%	2,287	57%
EBITDA	223		73	

*EBITDA=operating income + depreciation & amortization expenses

16



Thank You

<http://www.mpi.com.tw>