

MPI Corporation 6223.TT

READY FOR THE TEST™

Presentation Disclaimer

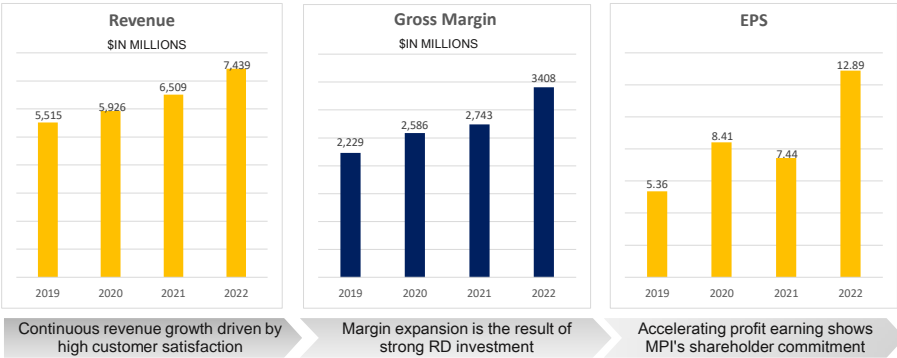
The information herein contains forward-looking statements. We have based these forward-looking statements on our current expectations and projections about future events. Although we believe that these expectations and projections are reasonable, such forward-looking statements are inherently subject to risks, uncertainties and assumptions about us, including, among other things: the intensely competitive Semi-conductor, and LED industries and markets; Cyclical nature of the semiconductor industry; Risks associated with global business activities; General economic and political conditions. All financial figures discussed herein are prepared pursuant to IFRS. All audited figures will be publicly announced upon the completion of our audited process.

Company at a Glance

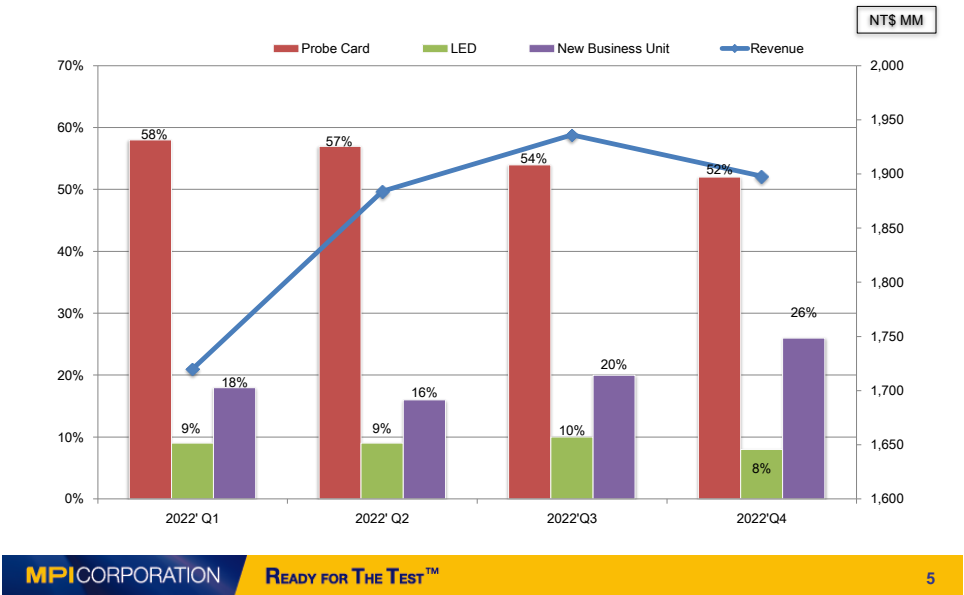


Founded	July, 25, 1995
Paid-in Capital	NTD\$ 942M (2023.2.28-the latest)
Employees	1,622 (2023.2.28)

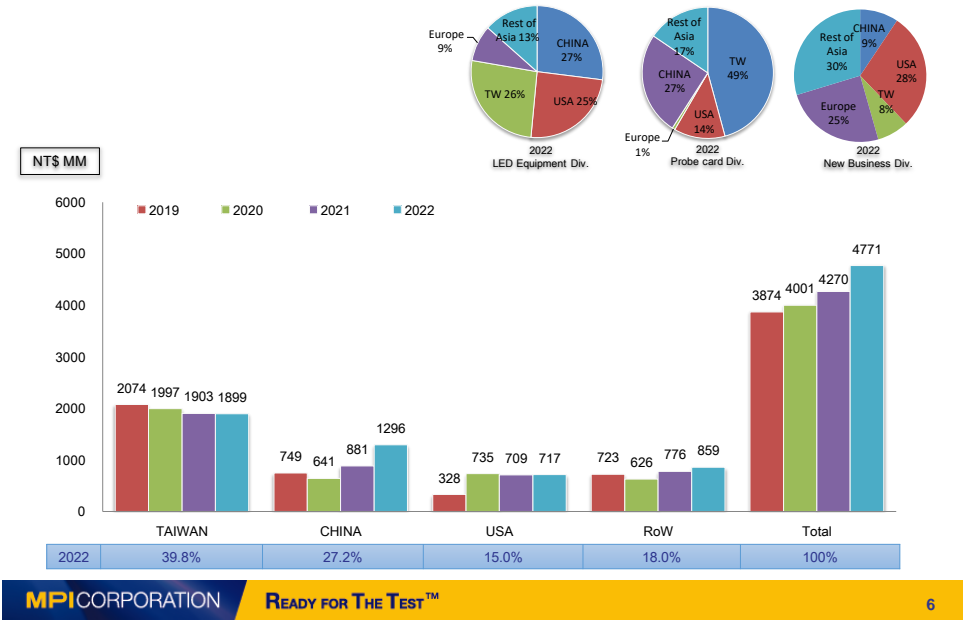
Solid Performance



Business Portfolio



Net Sales by Geography



Agenda

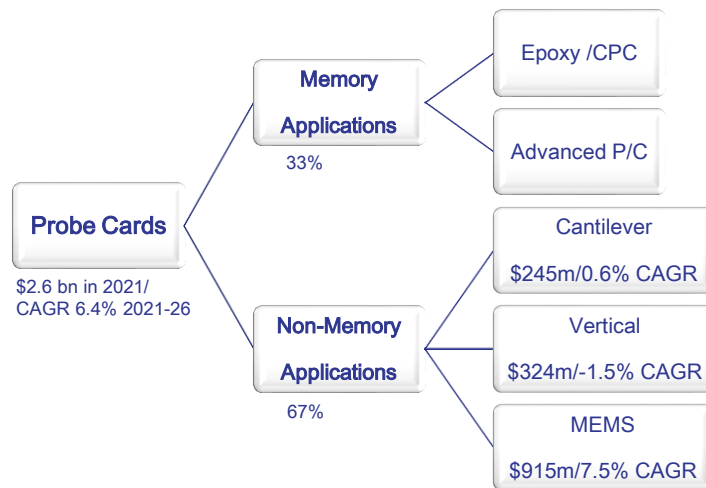
■ Business Contents

- Semi-conductor (Probe Card)
- Photonics Automation (LED)
- Thermal & AST

■ Financial Statements

Semi-conductor (Probe Card)

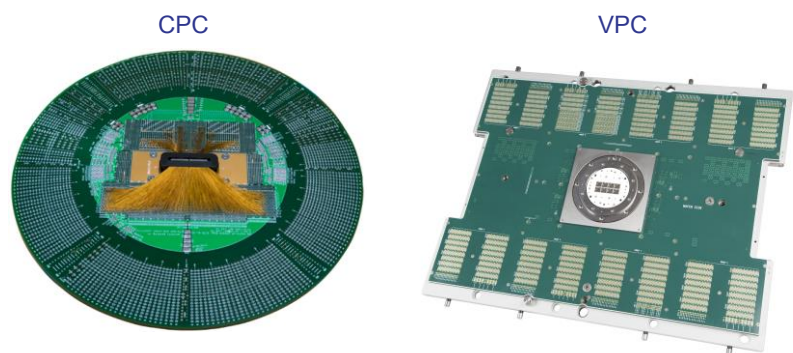
Global Probe Card Market Update



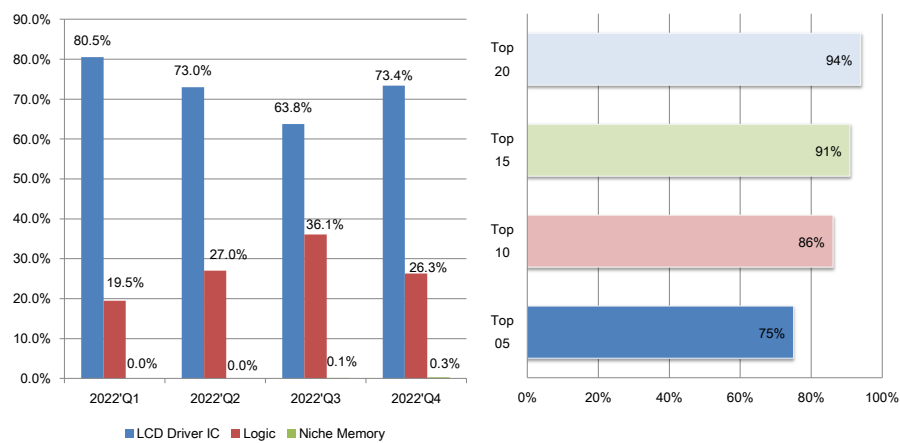
Top 10 Probe Card Vendors (2016-2021)

(Rank)		2016	2017	2018	2019	2020	2021
FormFactor, Inc.	USA	1	1	1	1	1	1
Micronics Japan Co., Ltd.	Japan	2	2	3	3	3	3
Technoprobe	Italy	3	3	2	2	2	2
Japan Electronic Materials	Japan	4	4	4	4	4	4
MPI Corporation	Taiwan	5	5	5	5	5	5
SV TCL	Singapore	6	6	6	6	7	8
Microfriend	Korea	7	7	10	10	10	-
Korea Instrument	Korea	8	8	7	8	6	7
Cascade Microtech	USA	9	-	-	-	-	-
FEINMETALL	Germany	10	11	12	11	14	-

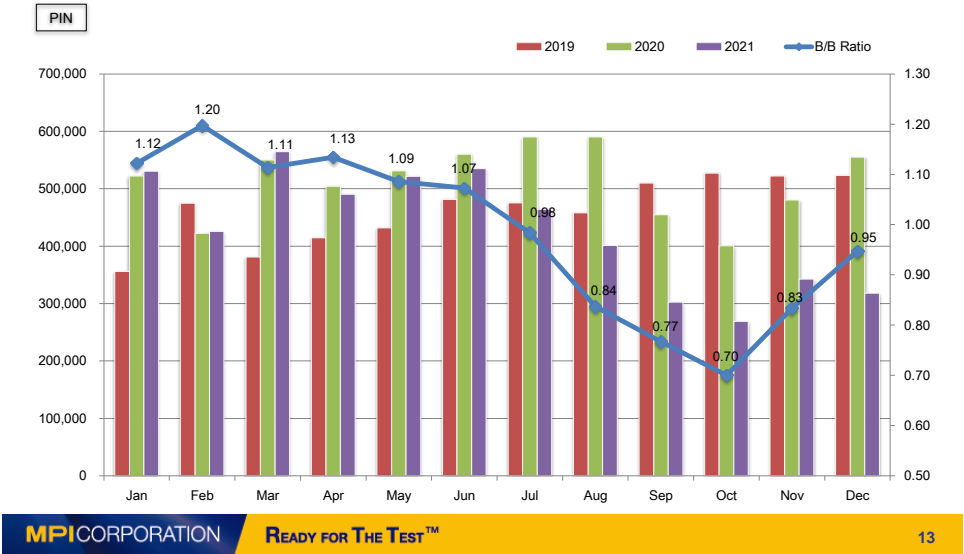
CPC & VPC



Product Mix of CPC (Cantilever)



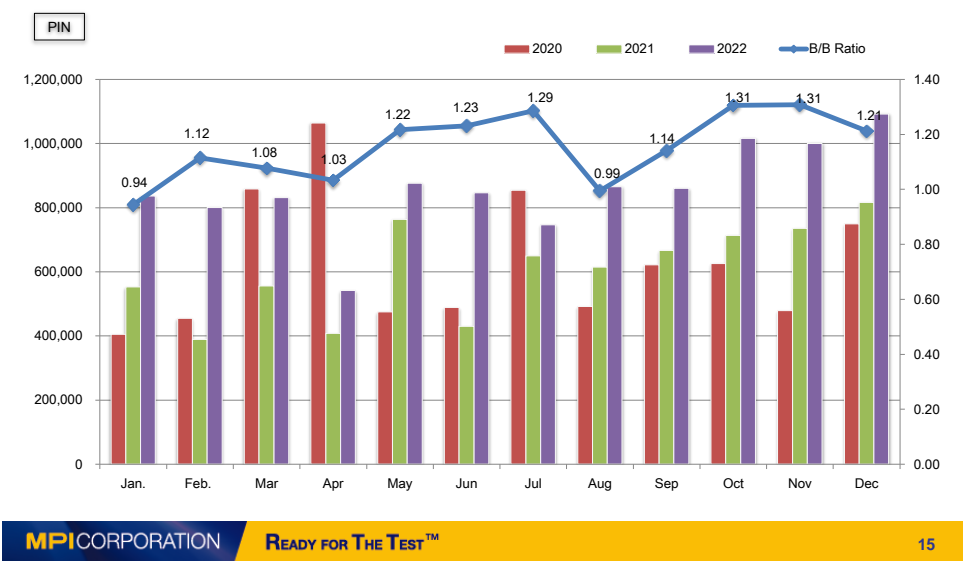
CPC Pin-Shipment



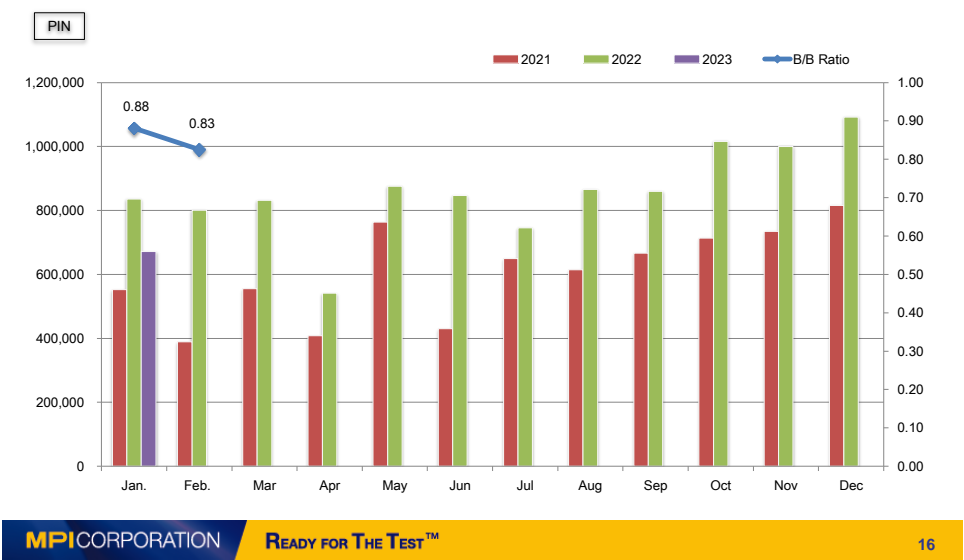
CPC Pin-Shipment_2023



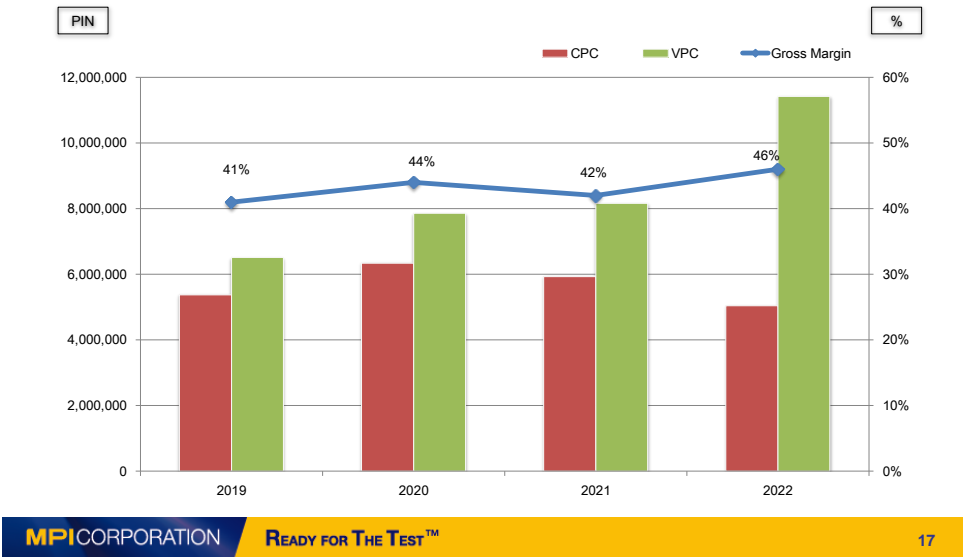
VPC Pin-Shipment



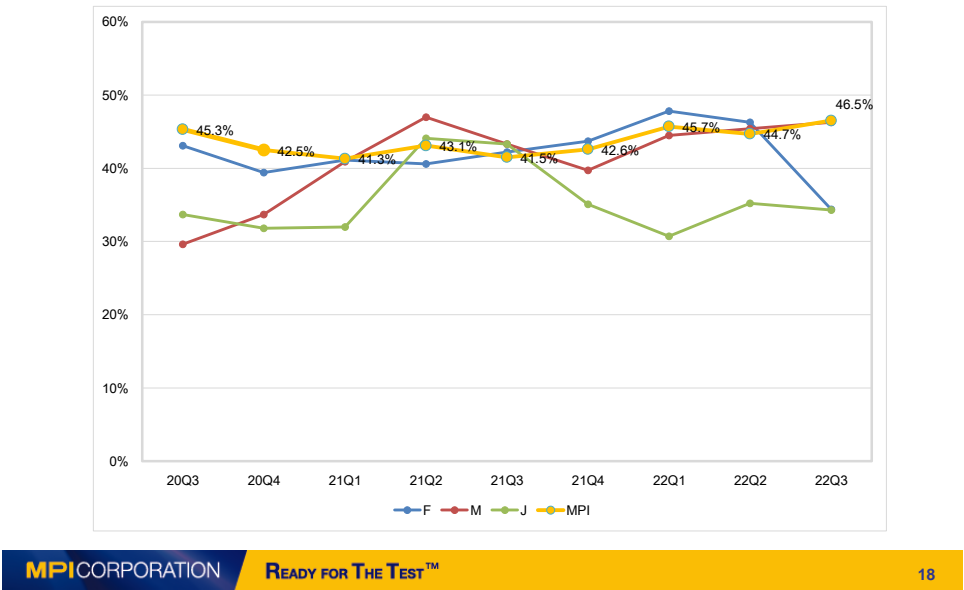
VPC Pin-Shipment_2023



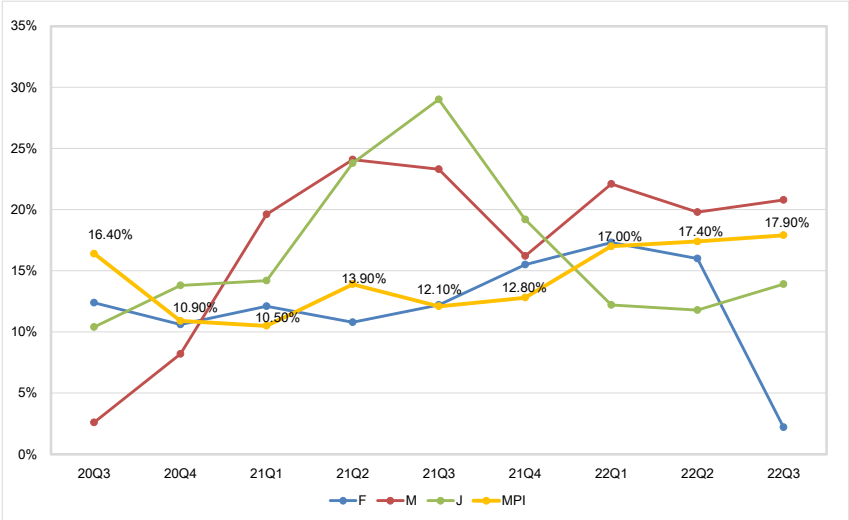
CPC and VPC Yearly Status



Gross Margin Between Global Peers



Operating Margin Between Global Peers



MPI CORPORATION

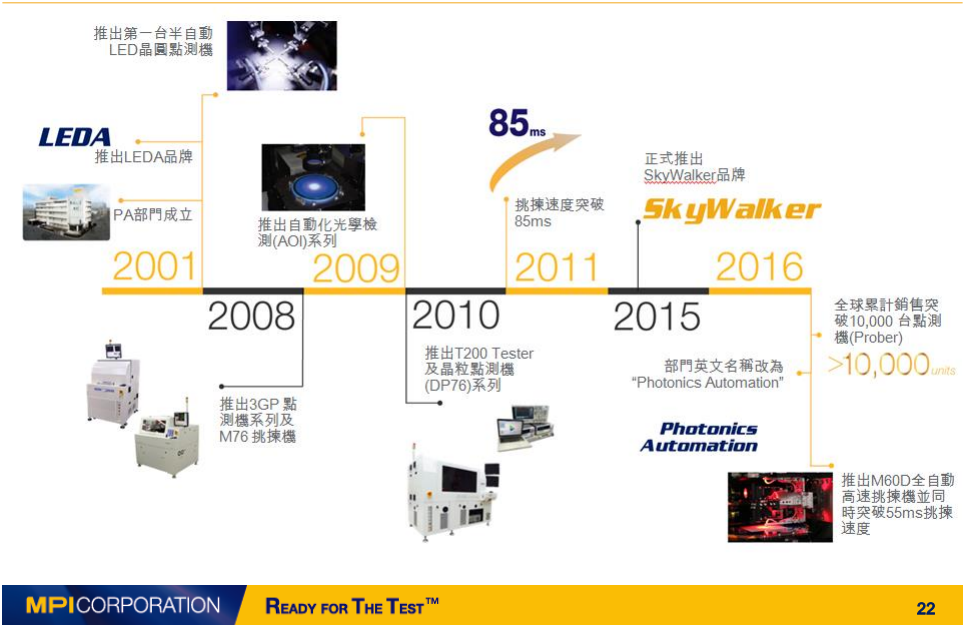
Photonics Automation
(LED)

READY FOR THE TEST™

Photonics Automation (PA) Overview



Milestone



Main Product Line



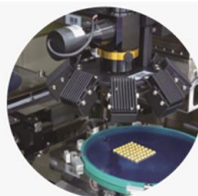
Probing System

Wafer
Flip chip
Single die



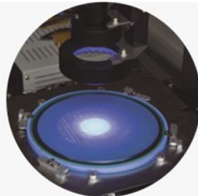
Testing System

Mass production software
Integrated spectrum meter
Integrated source meter



Chip Sorting

Mapping sorter



Inspection System

Chip after dicing
Chip after sorting

Package Probing

Panel
Bottom probing
Single package

Package Testing

From low to high power

Package Level

Chip Scale Package (CSP)
Foil to Foil (FTF)



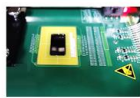
Wafer



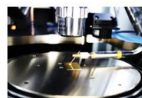
Tape



Die



Packaging Substrate

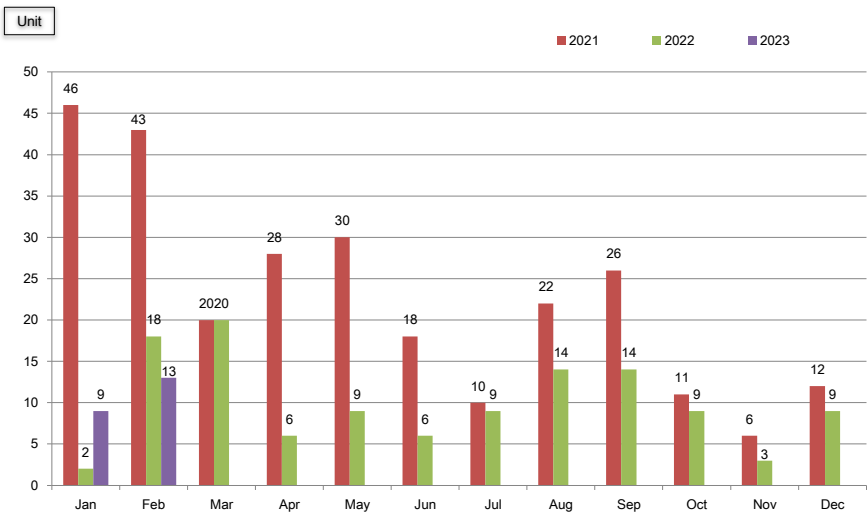


Photodiode(PD)



LED Package Probing

2022 Shipment



MPICORPORATION

New Business Unit (Thermal/AST)

READY FOR THE TEST™

MPI*Thermal*

Hot and Cold Air Flow
Environmental Temperature Test

-100°C  +300°C

ThermalAir Series
Temperature Testing Systems



Applications & Industry Segments



Semiconductor



Automotive



Aerospace



Telecommunications



Fiber Optic



Electronics



Sensors



Advanced Technology

MPI Advanced Semiconductor Test

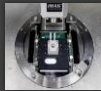
Engineering Probe Systems
and
RF Probe Products



Applications & Industry Segments



Device Characterization



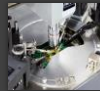
High Power



RF & mmW



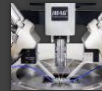
Design Validation



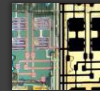
Failure Analysis



Wafer Level Reliability



Silicon Photonics



Laser Cutter

MPI CORPORATION

Financial Statements

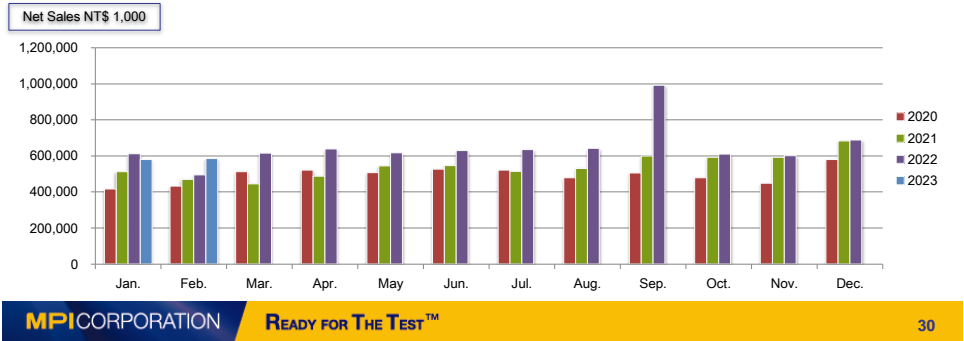
READY FOR THE TEST™

Balance Sheet Highlight

NT\$Million	2021		2022	
Cash and Cash Equivalents	1,324	14%	2,382	22%
Fixed Assets	4,427	45%	4,494	41%
Total Assets	9,857	100%	10,902	100%
LT Debt	1,134	12%	1,038	10%
Shareholders' Equity	6,047	62%	6,893	63%
EBITDA	828	13%	1,440	19%
*EBITDA=operating income + depreciation & amortization expenses				

Income Statement

NT\$1,000	2021		2022	
Net Sales	6,508,725	100%	7,439,175	100%
Cost of Goods Sold	3,765,309	58%	4,031,096	54%
Gross Profit	2,743,416	42%	3,408,079	46%
Operating Expense	1,935,798	30%	2,165,076	29%
Operating Income	807,618	12%	1,243,003	17%
Investment Income & Others	21,124		197,872	
Net Income (before tax)	695,458	11%	1,212,262	16%
EPS	7.44		12.89	



MPICORPORATION



Thank You



<http://www.mpi-corporation.com>

READY FOR THE TEST™