

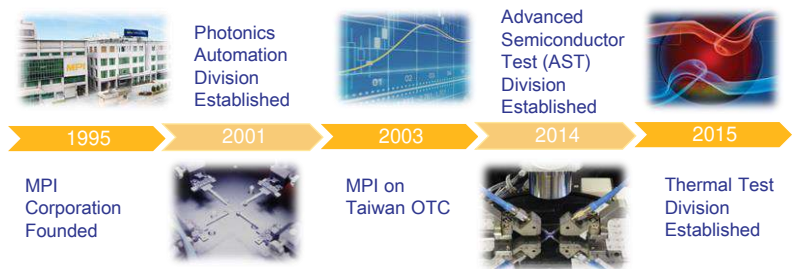
MPI Corporation 6223.TT

READY FOR THE TEST™

Presentation Disclaimer

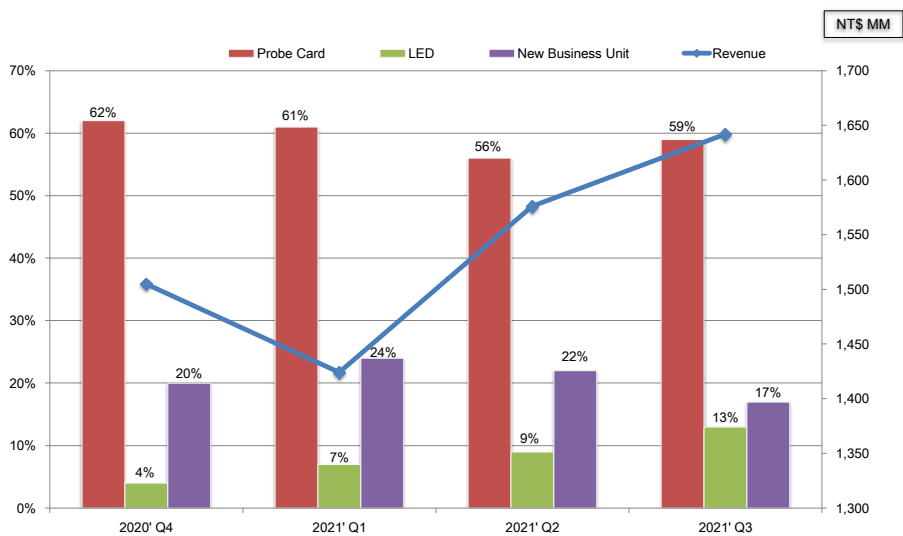
The information herein contains forward-looking statements. We have based these forward-looking statements on our current expectations and projections about future events. Although we believe that these expectations and projections are reasonable, such forward-looking statements are inherently subject to risks, uncertainties and assumptions about us, including, among other things: the intensely competitive Semi-conductor, and LED industries and markets; Cyclical nature of the semiconductor industry; Risks associated with global business activities; General economic and political conditions. All financial figures discussed herein are prepared pursuant to IFRS. All audited figures will be publicly announced upon the completion of our audited process.

Company at a Glance

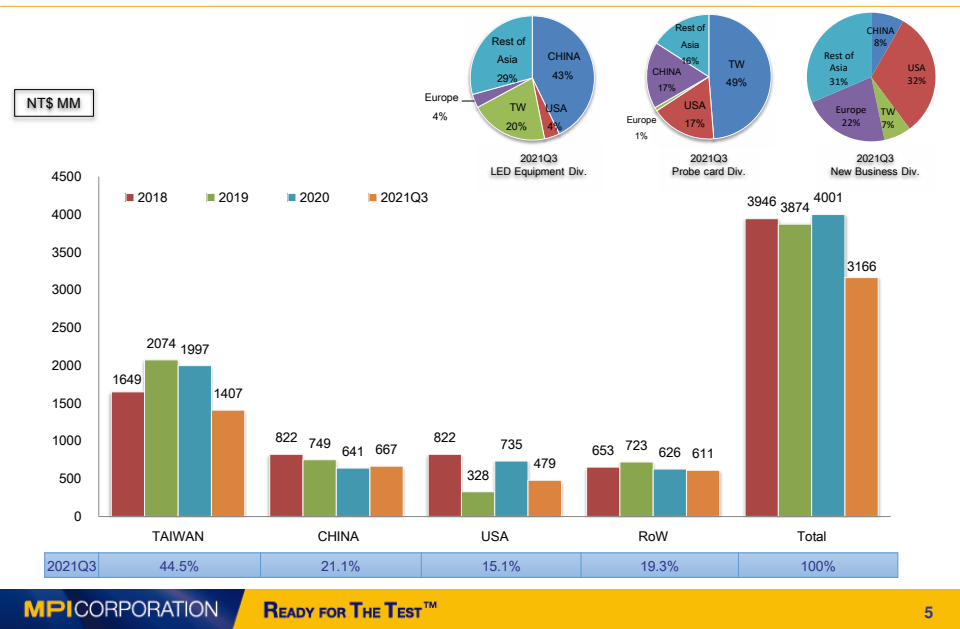


Founded	July, 25, 1995
Paid-in Capital	NTD\$ 941M (2022.2.28-the latest)
Employees	1,592 (2022.2.28)

Business Portfolio



Net Sales by Geographic



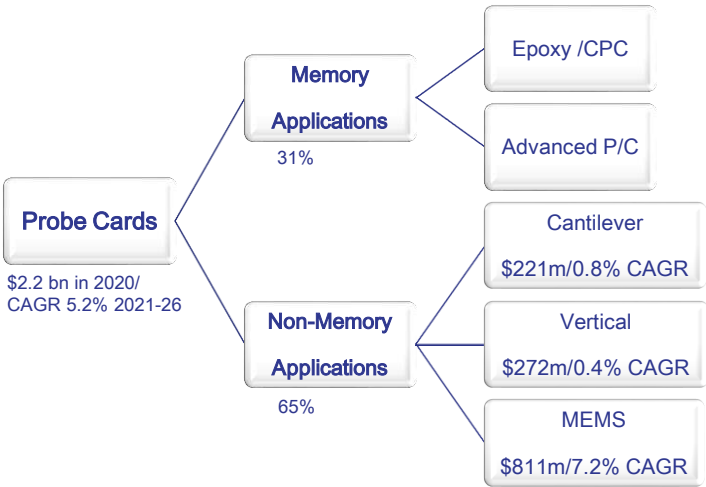
Agenda

- Business Contents
 - Semi-conductor (Probe Card)
 - Photonics Automation (LED)
 - Thermal & AST

- Financial Statements

Semi-conductor (Probe Card)

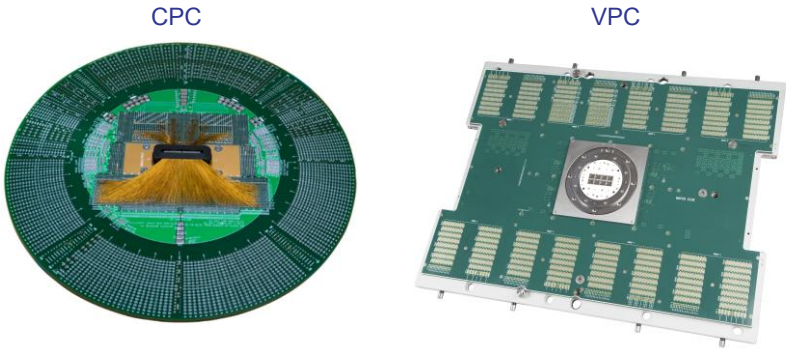
Global Probe Card Market Update



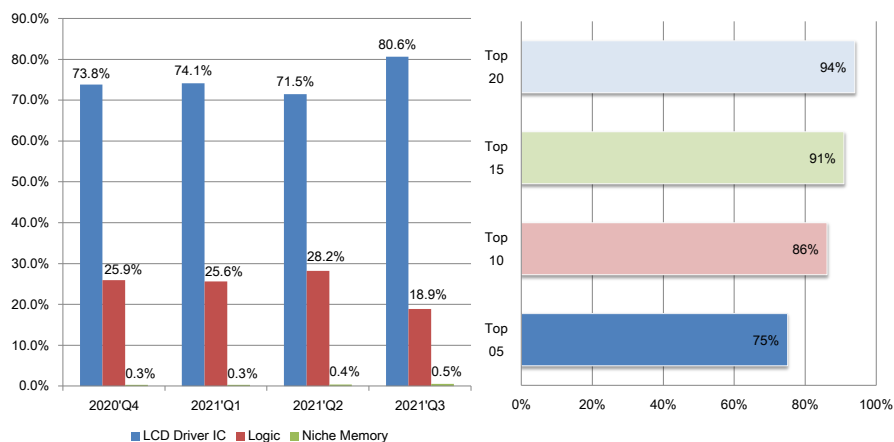
Top 10 Probe Card Vendors (2016-2021)

(Rank)		2016	2017	2018	2019	2020	2021
FormFactor, Inc.	USA	1	1	1	1	1	1
Micronics Japan Co., Ltd.	Japan	2	2	3	3	3	3
Technoprobe	Italy	3	3	2	2	2	2
Japan Electronic Materials	Japan	4	4	4	4	4	4
MPI Corporation	Taiwan	5	5	5	5	5	6
SV TCL	Singapore	6	6	6	6	7	10
Microfriend	Korea	7	7	10	10	10	8
Korea Instrument	Korea	8	8	7	8	6	5
Cascade Microtech	USA	9	-	-	-	-	-
FEINMETALL	Germany	10	11	12	11	14	13

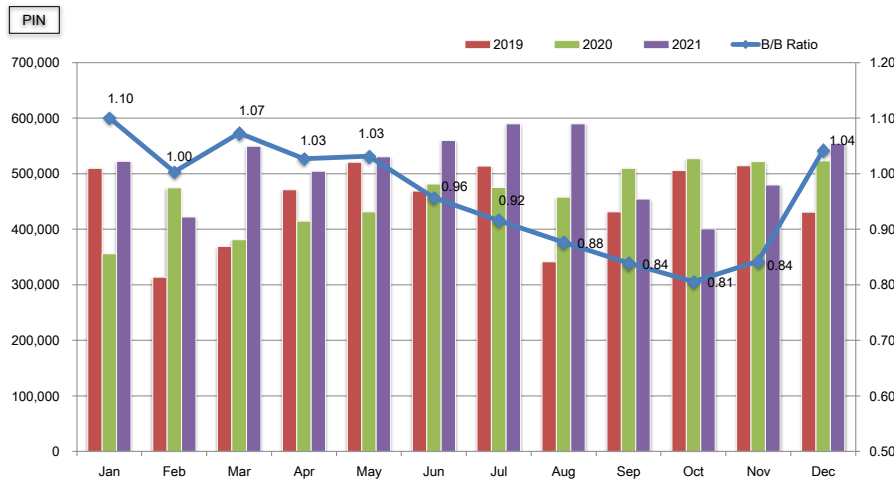
CPC & VPC



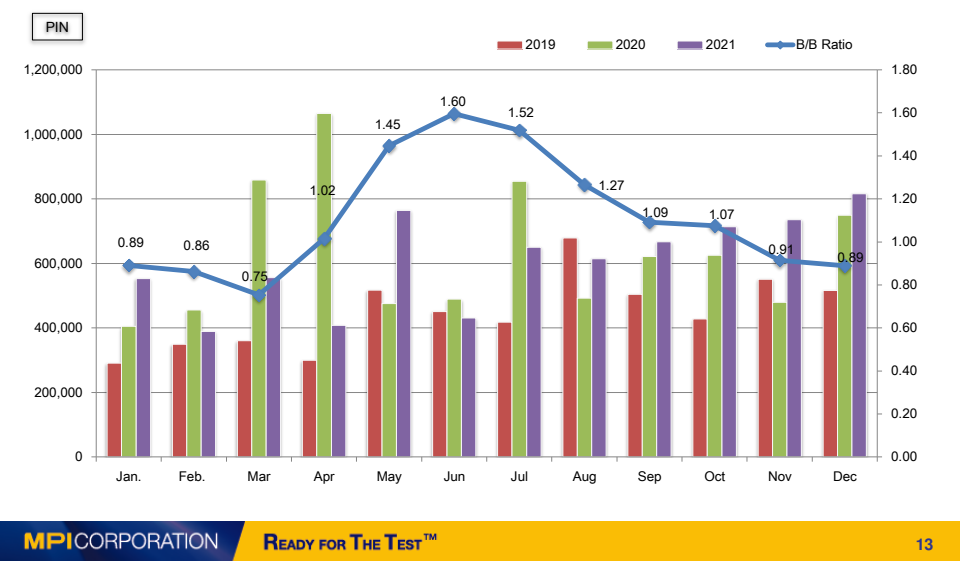
Product Mix of CPC (Cantilever)



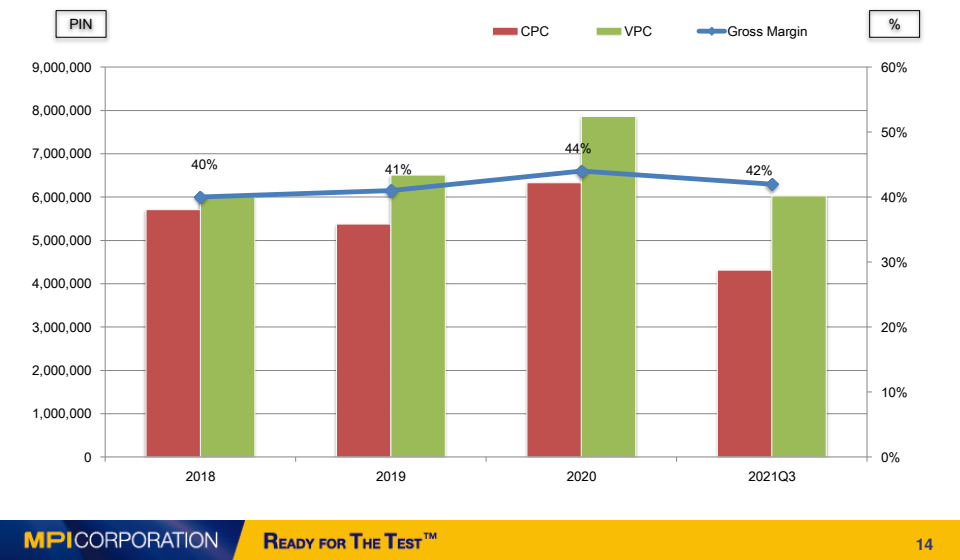
CPC Pin-Shipment



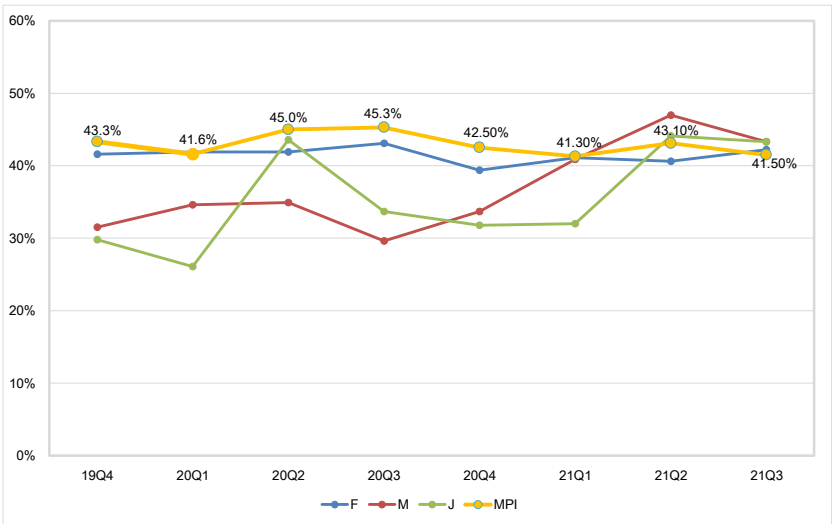
VPC Pin-Shipment



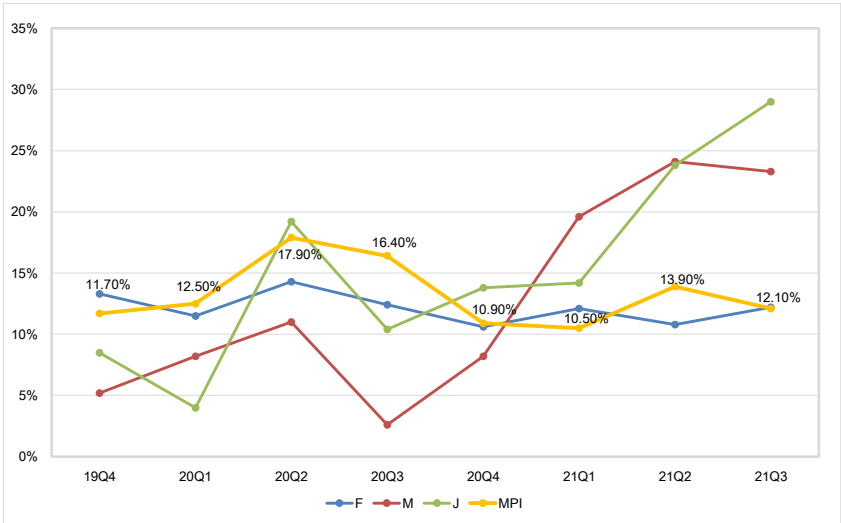
CPC and VPC Yearly Status



Gross Margin Between Global Peers



Operating Margin Between Global Peers

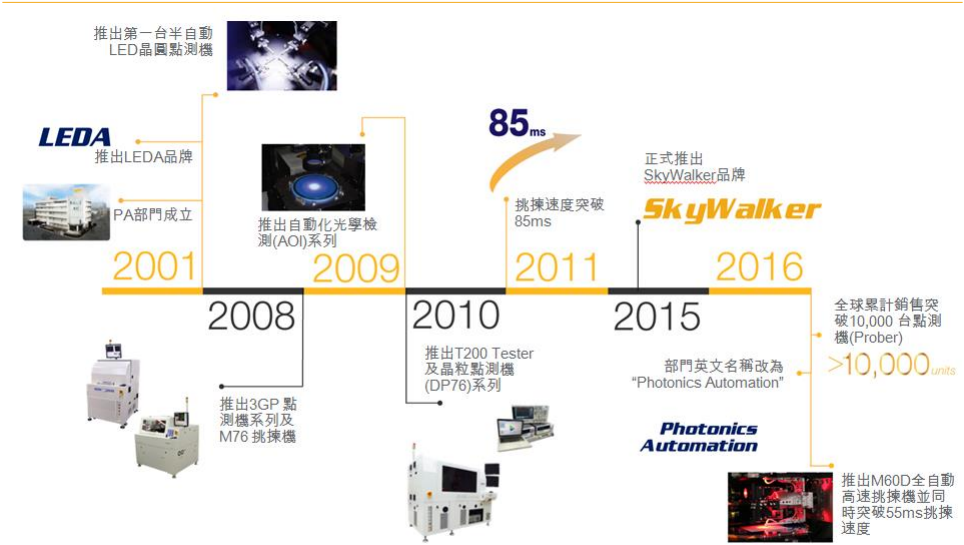


Photonics Automation (LED)

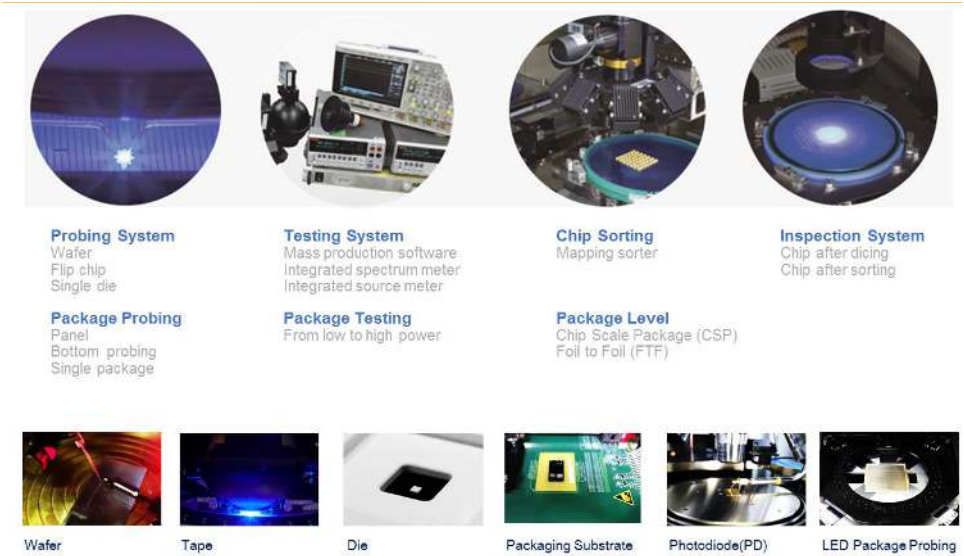
Photonics Automation (PA) Overview



Milestone



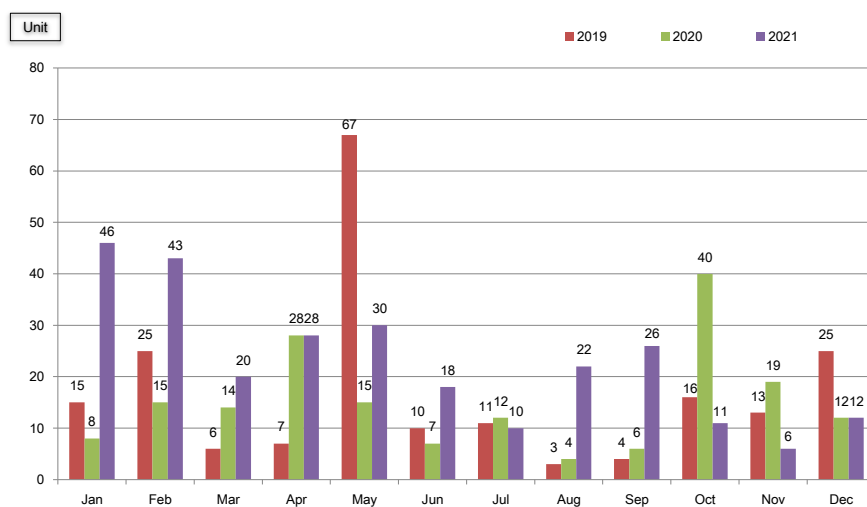
Main Product Line



Wafer Technology Migration



2021 Shipment



MPICORPORATION

New Business Unit (Thermal/AST)

READY FOR THE TEST™ 23

MPI Thermal

Hot and Cold Air Flow Environmental Temperature Test

-100°C  +300°C

ThermalAir Series
Temperature Testing Systems



Applications & Industry Segments



Semiconductor



Automotive



Aerospace



Telecommunications



Fiber Optic



Electronics



Sensors



Advanced Technology

MPI Advanced Semiconductor Test

Engineering Probe Systems
and
RF Probe Products



Applications & Industry Segments



Device Characterization



High Power



RF & mmW



Design Validation



Failure Analysis



Wafer Level Reliability



Silicon Photonics



Laser Cutter

MPI CORPORATION

Financial Statements

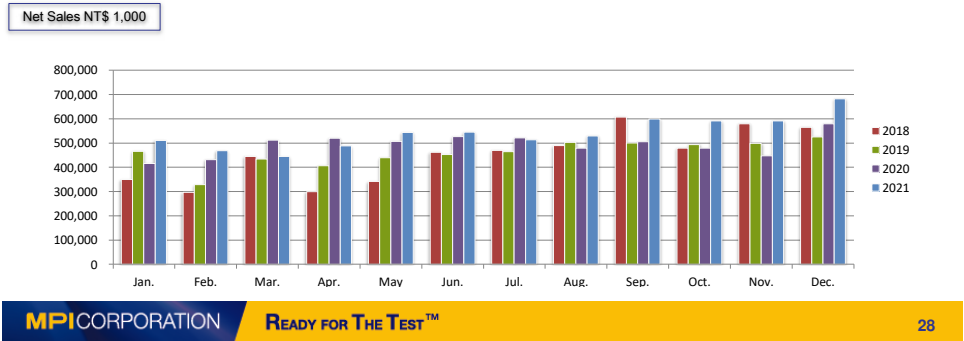
READY FOR THE TEST™

Balance Sheet Highlight

	3Q 2021		3Q 2020	
Cash and Cash Equivalents	1,172	12%	1,114	13%
Fixed Assets	4,165	44%	3,465	42%
Total Assets	9,522	100%	8,326	100%
LT Debt	764		629	
Shareholders' Equity	5,828	61%	5,451	66%
EBITDA	568		690	
*EBITDA=operating income + depreciation & amortization expenses				

Income Statement

NT\$1,000	Q3' 2021		Q3' 2020	
Net Sales	4,643,475	100%	4,419,890	100%
Cost of Goods Sold	2,694,490	58%	2,474,040	56%
Gross Profit	1,948,985	42%	1,945,850	44%
Operating Expense	1,380,247	30%	1,250,032	28%
Operating Income	568,738	12%	695,818	16%
Investment Income & Others	-400		-4,859	
Net Income (before tax)	473,997	10%	586,761	14%
EPS	5.08		7.09	



MPICORPORATION



Thank You



<http://www.mpi-corporation.com>

READY FOR THE TEST™