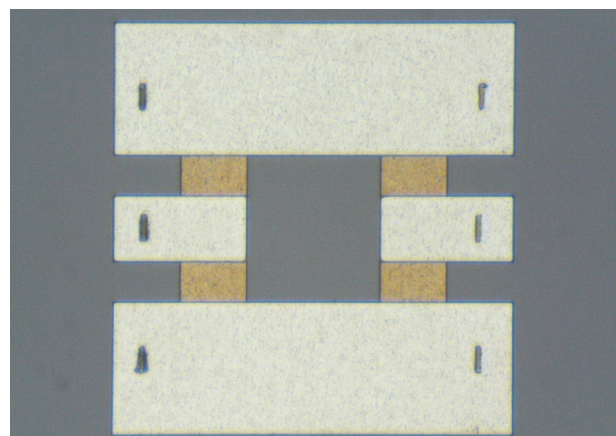
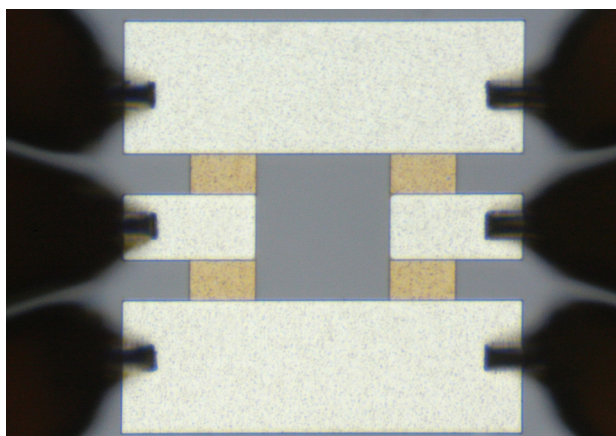
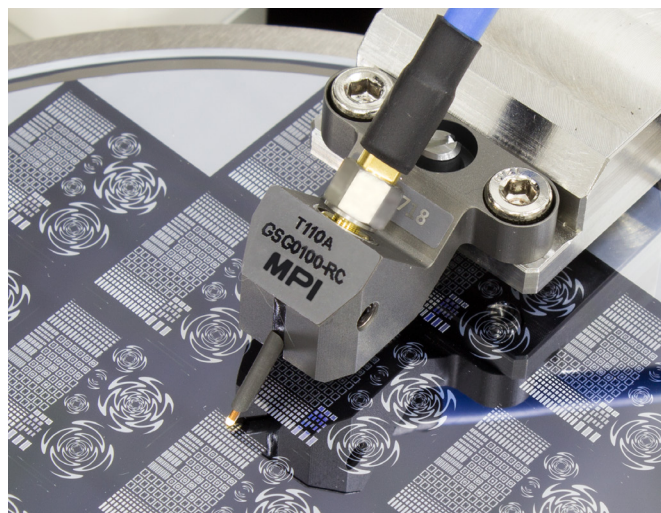


TITAN-RC Probe

MPI Corporation expands the family of the RF TITAN Probe by introducing the TITAN-RC Probe. The new probe model features the contact tip width reduced by 33% down to 20 μm .

Fully aligned with the industry trend towards further reduction of the pad size for RF devices and ICs, the TITAN-RC probe significantly reduces cost of test for next generation commercial RF and mm-wave silicon devices and ICs. It enables accurate, and reproducible measurement results obtained for Si devices with Al pad metallisation as small as 30x35 μm .

TITAN-RC probes are available in GSG tips configuration with probe pitch from 50 μm to 150 μm .



TITAN-RC Probes in contact (left) and the probes footprint on the Al pads of the device (right), respectively.

Mechanical Characteristics

Cantilever needle material	Ni alloy
Body material	Al alloy
Contact pressure @2 mils overtravel	20 g
Lifetime, touchdowns	> 1,000,000
Ground and signal alignment error ^[1]	$\pm 3 \mu\text{m}^{[1]}$
Planarity error ^[1]	$\pm 3 \mu\text{m}^{[1]}$
Contact footprint width	< 20 μm
Contact resistance on Au	< 3 m Ω
Thermal range	-60 to 175 $^{\circ}\text{C}$

[1] Parameter may vary depending upon tip configuration and pitch.